



MONTHLY MEMBERSHIP PROGRESS REPORT

District 11 E1

Results as of: 05/31/2018

GMT: STEVE ANTON

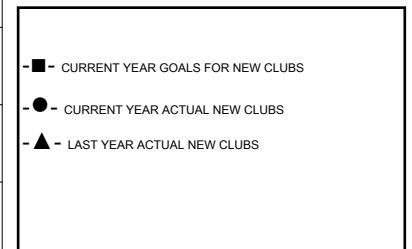
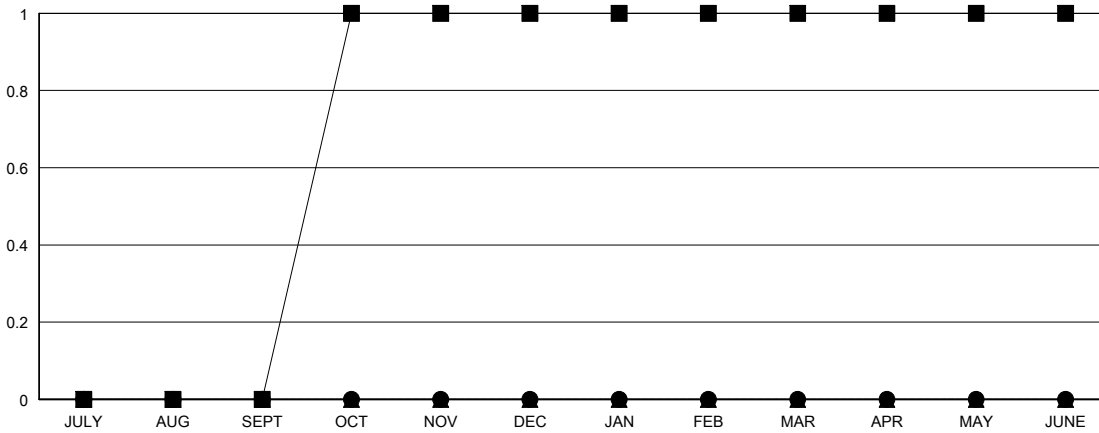
LOCATION MICHIGAN

GMT CA

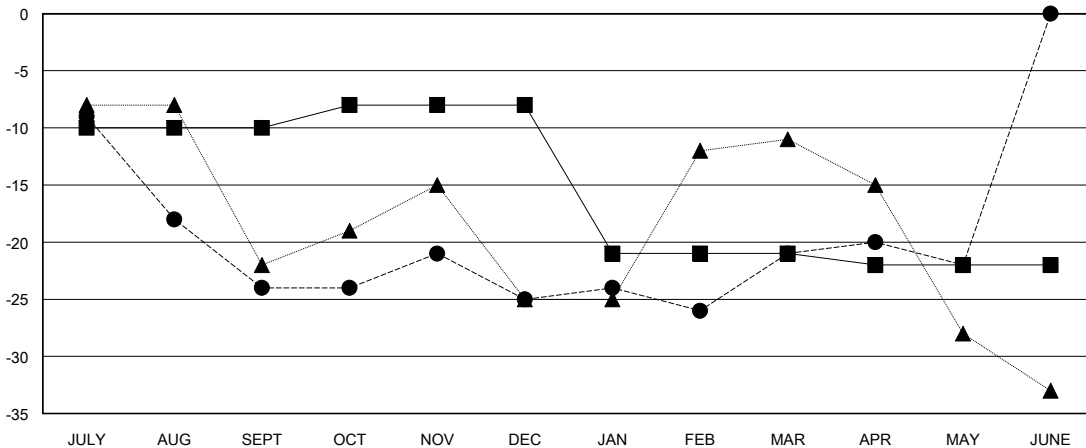
Clubs			
RESULTS FOR 2017-2018			
QUARTER	NEW CLUB GOAL	NEW CLUBS	DROPPED CLUBS
JULY/AUG/SEPT	0	0	0
OCT/NOV/DEC	1	0	0
JAN/FEB/MAR	0	0	0
APR/MAY/JUNE	0	0	0

Members			
RESULTS FOR 2017-2018			
QUARTER	MEMBER GROWTH NET GOAL	MEMBER GROWTH ACTUAL	DROPPED MEMBERS ACTUAL (including transfers)
JULY/AUG/SEPT	-10	34	54
OCT/NOV/DEC	2	23	16
JAN/FEB/MAR	-13	30	26
APR/MAY/JUNE	-1	10	10

GOALS AND ACTUAL NEW CLUBS CUMULATIVE



GOALS AND ACTUAL MEMBERS CUMULATIVE



DROPPED CLUBS: 0	29 CLUBS OF 43 ADDED 1 OR MORE NEW MEMBERS	<u>GENDER DISTRIBUTION</u>	
DROPPED MEMBERS		MALE	735 (67.31%)
DECEASED	20	FEMALE	357 (32.69%)
CLUB CANCELLED	0	Women Percentage Fiscal Year Goal: 31%	
OTHER	86	TOTAL FAMILY UNIT MEMBERS	277
TOTAL	106	FAMILY MEMBERS PAYING HALF DUES	141

[CLICK HERE FOR CUMULATIVE MEMBERSHIP DATA](#)